

Est. 1995

AFRICANOS

PROPERTY DEVELOPERS

PRESTIGIOUS PROPERTIES IN LARNACA - CYPRUS
WE ARE YOUR LOCAL PROPERTY DEVELOPER!



MACKENZY SUNRISE RESIDENCES
47A Touz Chane Str., 6027, Larnaca



MACKENZY DREAM RESIDENCES
20 Goethe Str., 6028, Larnaca



MACKENZY AURORA RESIDENCES
16 Goethe Str., 6028, Larnaca



LA MAISON GARDENS RESIDENCES
BLOCK A & BLOCK B
17 Grivas Str., 7102, Aradippou



MARINA RIVIERA RESIDENCES
BLOCK A, BLOCK B & BLOCK C
Steliou Mavromati Str., 7060, Larnaca



DOWNTOWN RESIDENCES
4 Sotiros Str., 6010, Larnaca

Contact Details

Africanos Property Developers Limited

Anastasia Court, 5th Floor, 2 United Nations Road. 6042, Larnaca, Cyprus
Tel.: +357 24828161

Email: directors@africanosproperties.com | info@africanosproperties.com

Website: www.africanosproperties.com

FIND US ON.:



All reasonable care has been taken in the preparation of this brochure and the information contained here in is believed to be correct, it cannot be guaranteed and is provided in good faith without liability. This brochure is for guidance only and does not constitute an offer or contract. Photographs, illustrations and artist impressions are indicative only and prospective clients must satisfy themselves as to correctness and suitability of the information through the architectural plans of the planning and building permit.



SERENITY

BLOCK C RESIDENCES
MICHAIL KOUTSOFTA 38



Africanos Property Developers Limited is an established family-run business specialising in residential and commercial real estate in the City of Larnaca, Cyprus and its surrounding district. Being one of the leading developers on the island, Africanos has built up a solid local and international clientele spanning more than twenty years.

Founder and Managing Director, Mr. Anastasis Anastasiou has combined his knowledge of real estate with the dedication and expertise of his sons, Themis and Panayiotis, and therefore what started as a small venture has flourished into a reputable organization with countless sales in first-class properties.

Africanos prides itself in its construction record, surpassing eighty multi-residential projects that have been sold and completed together with the relevant property title deeds.

Our clients are guided through the purchasing process in an easy, open and understandable way and management strongly focuses on providing quality and reliable after-sales services to all clients.

Africanos business services are based on trust, honesty and open communication – the essential building blocks for developing your Home Sweet Home!

Perfect Living



The project is located in the very exclusive and prestigious urban area in Larnaca less than 3 kilometres to the Larnaca Beachfront Blue Flag Beaches.

The project boasts 7 apartments, 1 bedrooms and 1 bathroom and 2 bedrooms and 2 bathrooms – all with spacious and contemporary living areas. The two third floor apartments benefit from individual private and luxury roof-gardens with amazing views of the lovely Neighborhood. Each apartment has one parking bay and a storage room on the ground level.

The lovely residential neighborhood is quiet and family orientated surrounded by large luxury houses and residential properties. The project is very near to schools, walking distance to Lidl Supermarket and the Metropolis Mall and with immediate access to highways to Nicosia, Limassol, Paphos and Ammoxostos. The Famous Kamares Aquaduct and Larnaca Salt Lake and Cineplex Entertainment Complex is in close proximity.

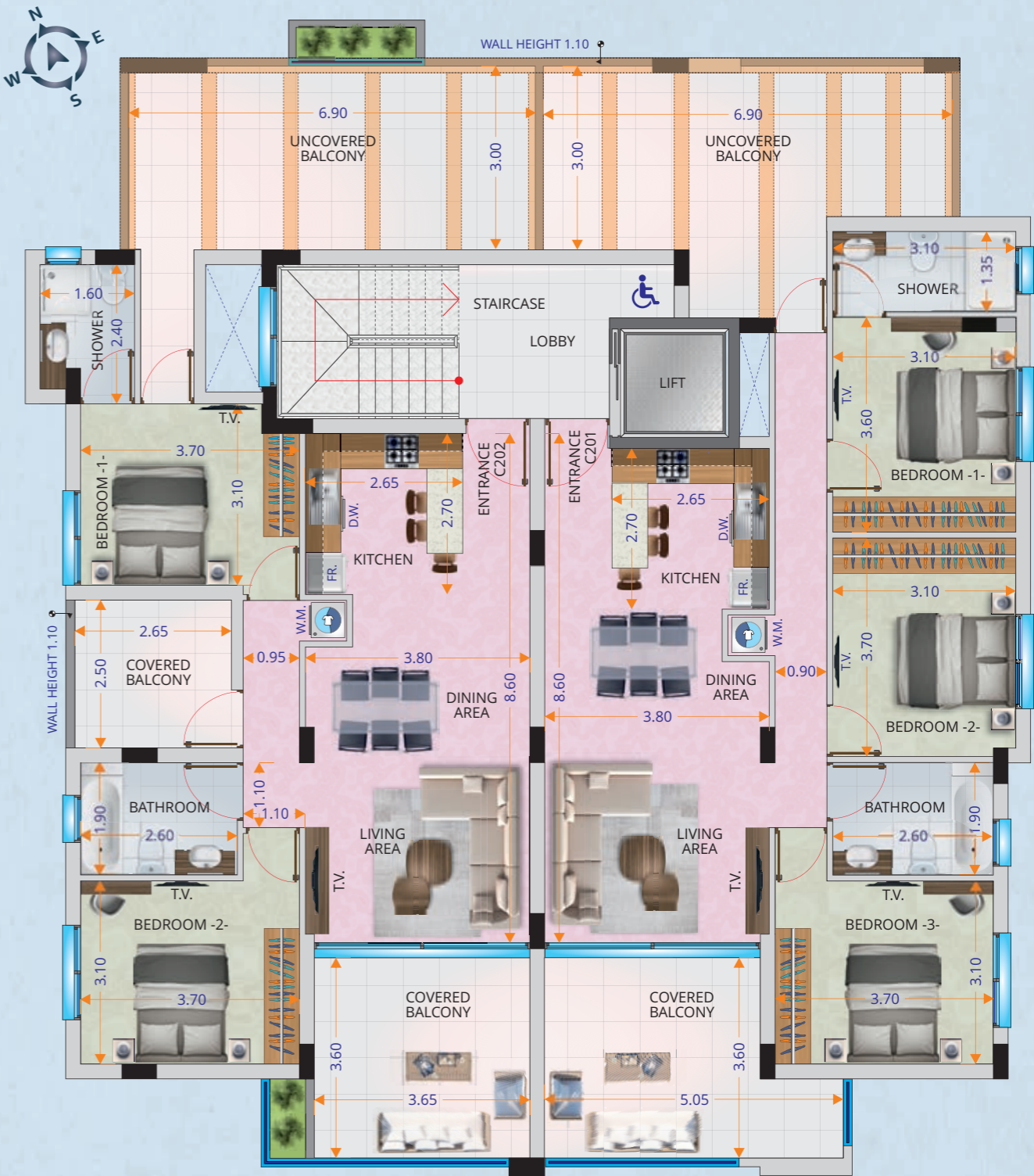
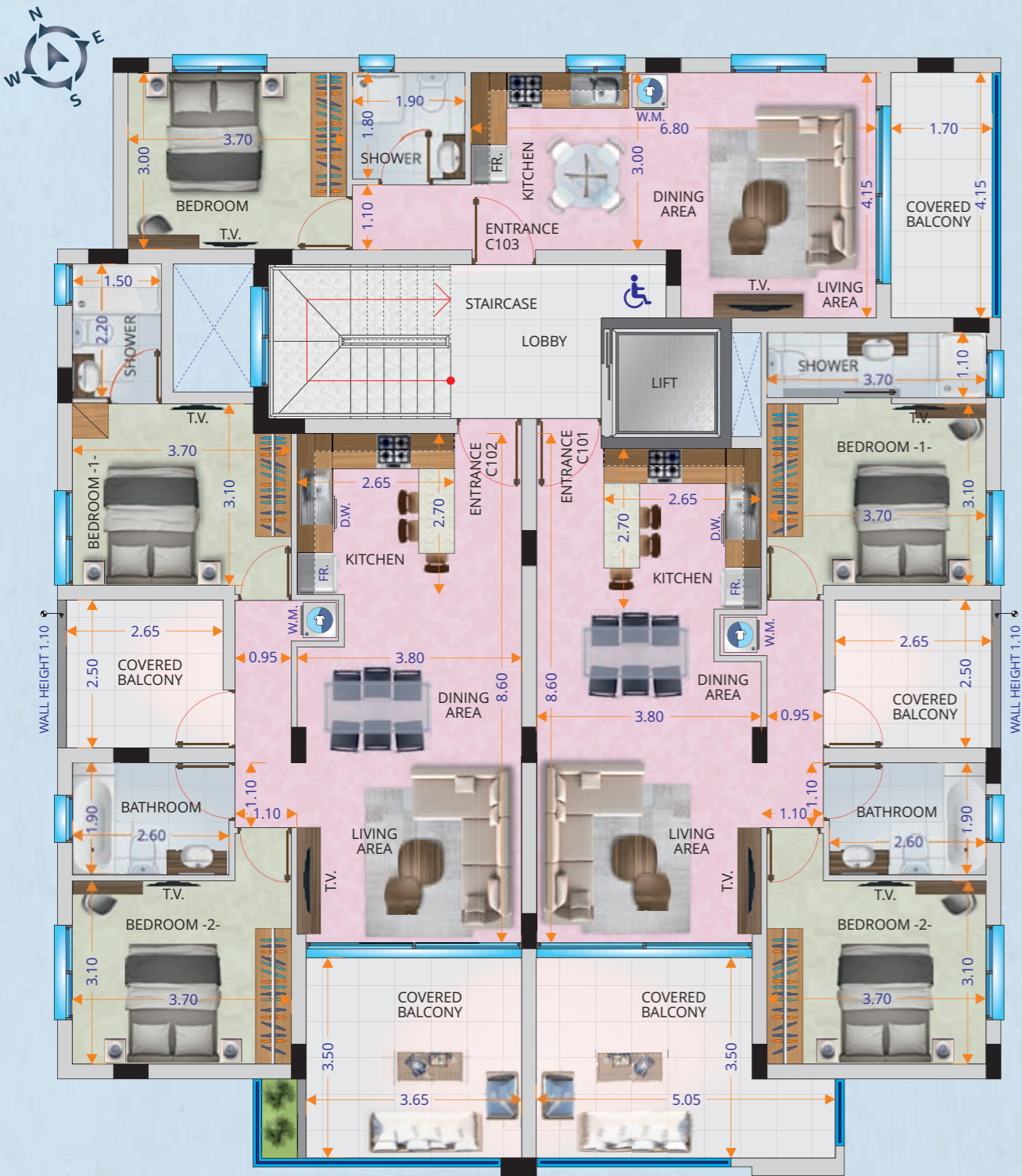
Serenity Residences Block C' has been fully designed and studied by our professional team of Architects, Engineers and Interior Designers. The modern design makes excellent use of features like top quality italian ceramic finish, unique glass balconies and clever layout of living areas designed to offer optional space, privacy and also a views of the prestigious neighbourhood and Famous Larnaca Salt Lake.





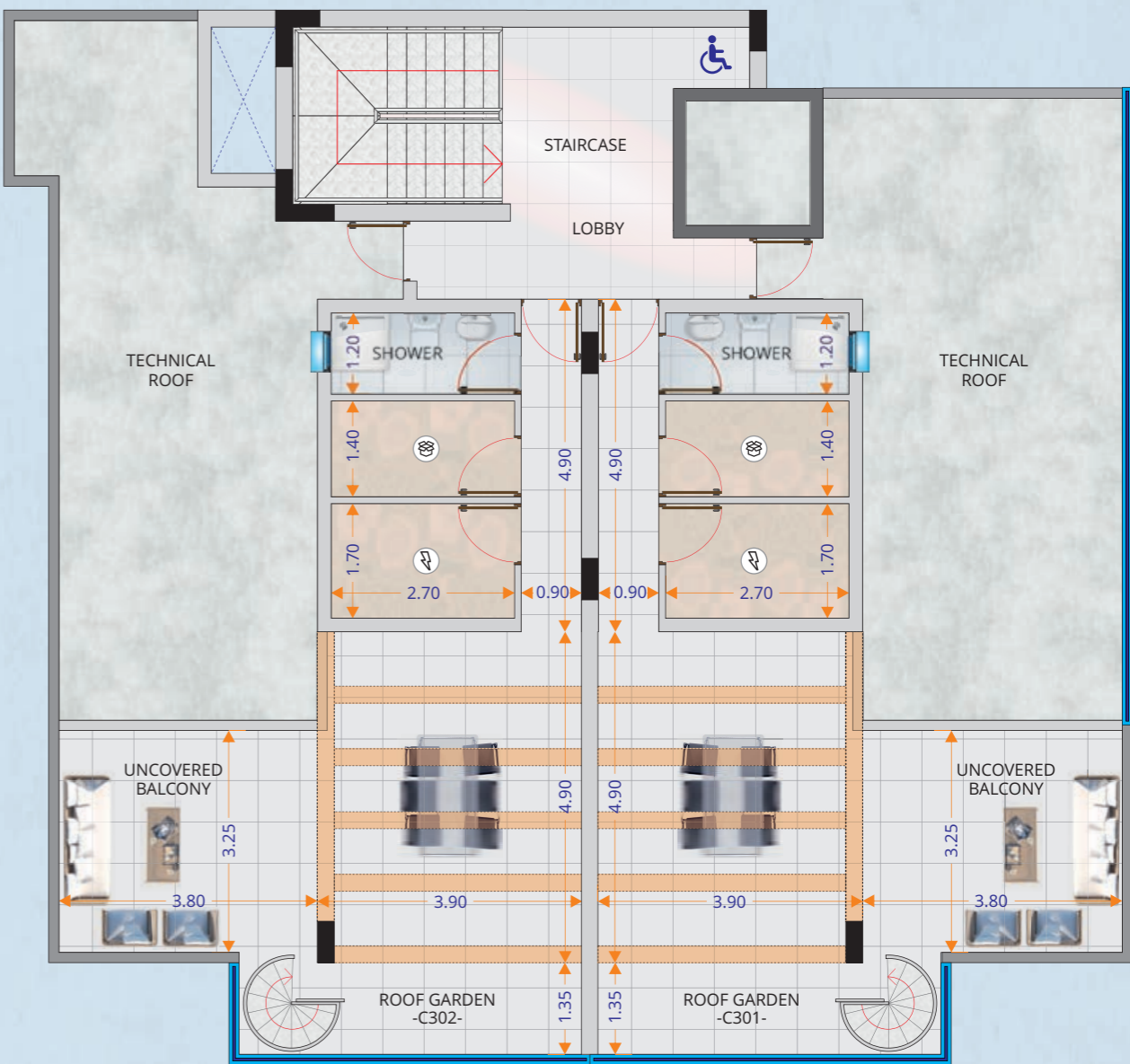
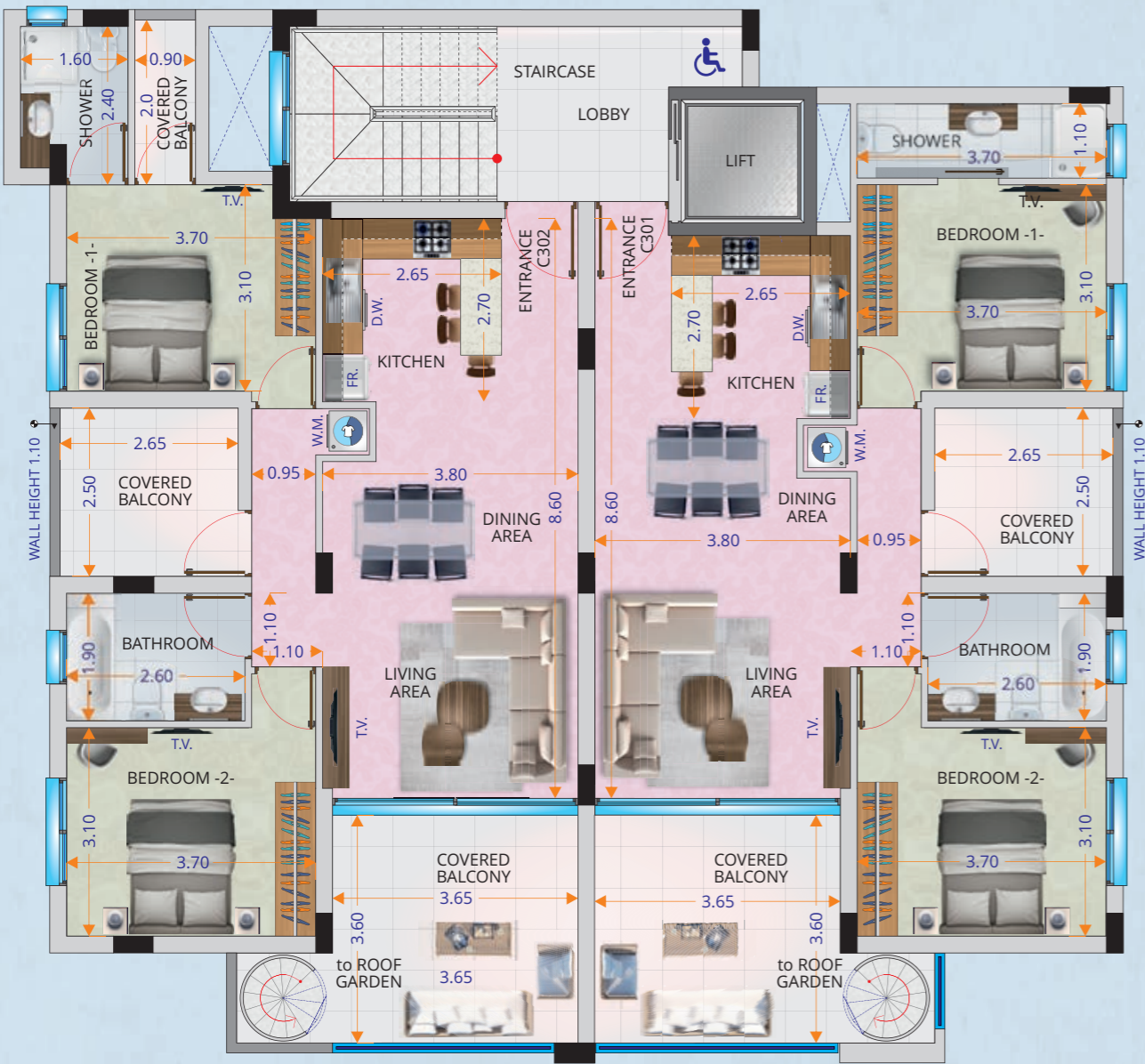
LEGEND

- STORAGE ROOM
- ELECTRICITY ROOM
- ENTRY PHONE
- MAIL BOXES
- REFUSE AREA



Αριθμός Διαμ/τος Apartment Number	Υπν/τια Bedrooms	Μπάνια Bathrooms	Συνολικό εμβαδόν Total Area	Εσωτερικό Καλ. Εμβαδόν Internal Covered Area	Καλυμμένες Βεράντες Covered Balconies	Αποθήκη Storage Area	Χώρος Στάθμευσης Parking	Κοινόχρηστοι Χώροι Common Areas
C101	2	2	125 m ²	80 m ²	23 m ²	4 m ²	12 m ²	6 m ²
C102	2	2	124 m ²	80 m ²	21 m ²	5 m ²	12 m ²	6 m ²
C103	1	1	79 m ²	50 m ²	8 m ²	3 m ²	12 m ²	6 m ²

Αριθμός Διαμ/τος Apartment Number	Υπν/τια Bedrooms	Μπάνια Bathrooms	Συνολικό εμβαδόν Total Area	Εσωτερικό Καλ. Εμβαδόν Internal Covered Area	Καλυμμένες Βεράντες Covered Balconies	Ακάλυπτες Βεράντες Uncovered Balconies	Αποθήκη Storage Area	Χώρος Στάθμευσης Parking	Κοινόχρηστοι Χώροι Common Areas
C201	3	2	157 m ²	96 m ²	16 m ²	24 m ²	3 m ²	12 m ²	6 m ²
C202	2	2	143 m ²	80 m ²	18 m ²	22 m ²	5 m ²	12 m ²	6 m ²



Αριθμός Διαμ/τος Apartment Number	Υπν/τια Bedrooms	Μπάνια Bathrooms	Συνολικό εμβαδόν Total Area	Εσωτερικό Καλ. Εμβαδόν Internal Covered Area	Καλυμμένες Βεράντες Covered Balconies	Αποθήκη Storage Area	Χώρος Στάθμευσης Parking	Κοινόχρηστοι Χώροι Common Areas
C301	2	2	124 m ²	80 m ²	20 m ²	6 m ²	12 m ²	6 m ²
C302	2	2	126 m ²	80 m ²	22 m ²	6 m ²	12 m ²	6 m ²

Αριθμός Διαμ/τος Apartment Number	Συνολικό εμβαδόν Total Area	Δωμ. Ηλεκτρικών εγκαταστάσεων / Αποθήκη / Τουαλέτα Electrical Facilities / Storage Room / W.C.	Ημικαλυμμένη Βεράντα Semi-covered Balconies
C301	59 m ²	13 m ²	46 m ²
C302	59 m ²	13 m ²	46 m ²

AFRICANOS KNOWS PERFECT LIVING!

01
02
03
04
05
06
07
08
09
10
11
12
13
14
15
16
17
18
19
20
21
22
23
24
25
26
27
28
29
30
31
32
33
34
35
36
37
38
39
40
41
42
43
44
45
46
47
48
49
50
51
52
53
54
55
56
57
58
59
60
61
62
63
64
65
66
67
68
69
70
71
72
73
74
75
76
77
78
79
80
81
82
83
84
85
86
87
88
89
90
91
92
93
94
95
96
97
98
99
100



COME, LET US SHOW YOU, YOUR NEW HOME!

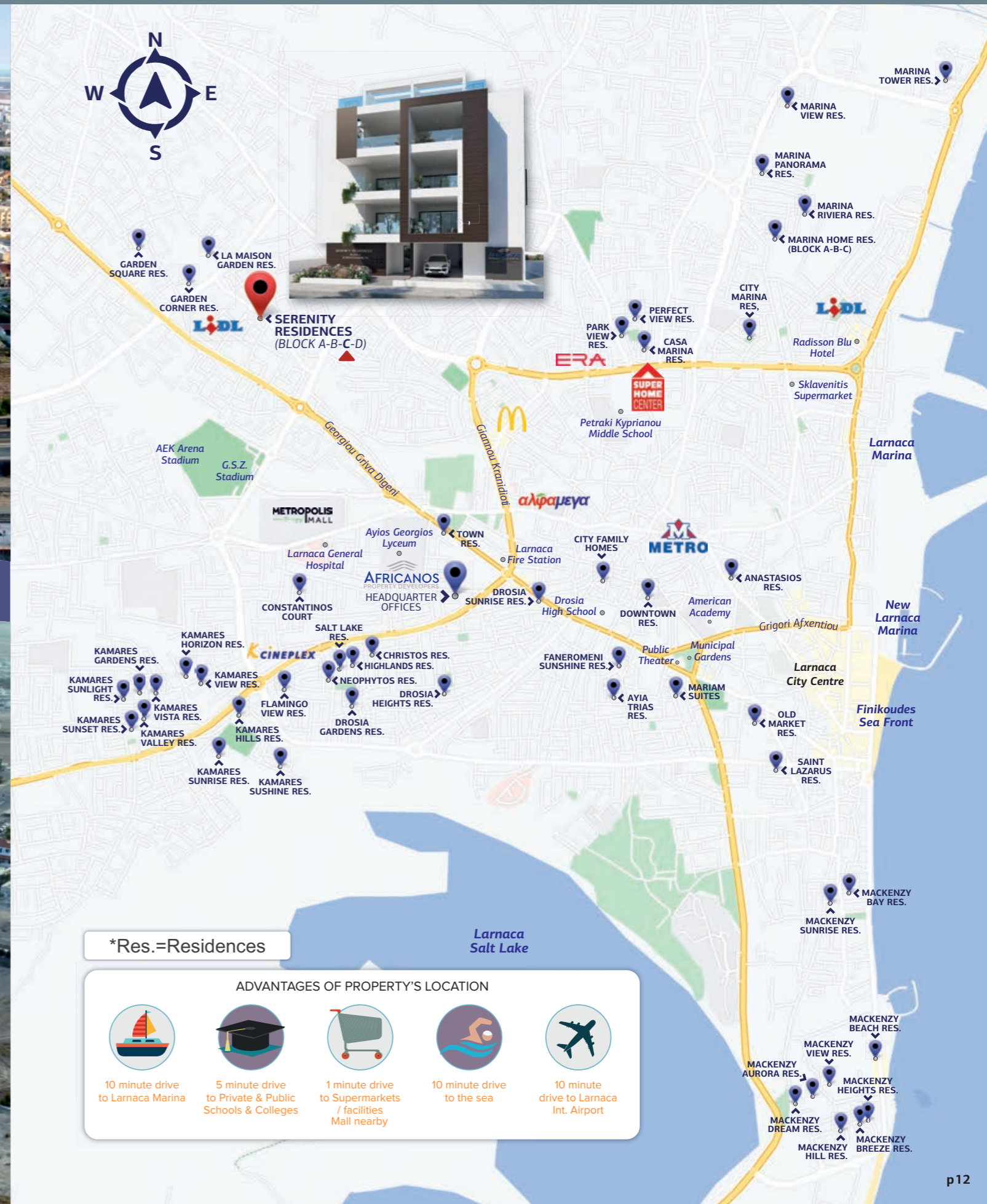




SERENITY RESIDENCES BLOCK C'



SERENITY RESIDENCES BLOCK C'



*Res.=Residences

ADVANTAGES OF PROPERTY'S LOCATION



10 minute drive
to Larnaca Marina



5 minute drive
to Private & Public
Schools & Colleges



1 minute drive
to Supermarkets
/ facilities
Mall nearby



10 minute drive
to the sea



10 minute
drive to Larnaca
Int. Airport

PART 1

CONSTRUCTION OF THE PROJECT

EARTHWORKS: Excavation and backfill of building's footprint according to structural engineer analysis approved by local authorities.

FOUNDATION (Substructure): Reinforced concrete foundations according to structural engineer analysis approved by local authorities.

FRAME (Superstructure): Reinforced concrete earthquake-resistant frame structure, according to structural engineer analysis approved by local authorities.

BRICKWORK & PLASTERING: Masonry walls consisted of 33cm thick thermal bricks on external walls, 25cm thick bricks on apartments' separating walls and 10cm thick bricks on internal dividing apartment walls. The walls rendering consists of 25mm of plaster on each side, followed by spatula layer (internally) and at least three layers of paint. According to the approved energy certificate. (or similar approved by the supervising architect)

FLOORS: Light-weight concrete layer to cover MEP services, followed by a screed layer to create a firm and even surface for the tileworks. All tiles are placed with high quality glue and grouting materials conforming with the Cyprus Standards. (or similar approved by the supervising architect)

PART 2

WATER PROOFING & THERMAL INSULATION

BELOW FOUNDATION: Installation of polythene membrane below the lean concrete layer to prevent rising moisture effect.

FOUNDATION: Three layers of cementitious waterproofing membrane with fiber glass mesh applied along the perimeter of the raft slab. High-density polyethylene studded membrane to prevent dump-rise and protect the water-proofing of foundation.(or similar approved by the supervising architect)

BRICKWALLS: Damp proof asphaltic base membrane of 3mm thickness, applied on the first course of bricks at ground level and veranda areas. (or similar approved by the supervising architect)

BALCONIES & ROOF GARDENS: Sloped concrete surface according to architect and mechanical engineer instructions, insulated with 3-layer cementitious membrane and fiber glass mesh. (or similar approved by the supervising architect)

ROOF: Sloped concrete screed surface according to architect and mechanical engineer instructions, thermoinsulated according to mechanical energy certificate and water insulated according to the supervising architect.

THERMAL INSULATION: Thermal insulated materials are used for the beams, columns, first floor slab and roof. The materials are specified by the energy certificated of the supervising mechanical engineer. Thermoinsulated windows and balcony doors according to the energy certificate approved. (or similar approved by the supervising architect)

PART 3

PARKING & STORAGE

Parking and storage areas are allocated as per architectural plans with provisions for electrical car charging points.

PART 4

COMMON AREAS

GARDEN: Garden is located at the front of the building on the ground level. Supported by an automatic irrigation system and illuminated during night with automated photocell unit.

LOBBY: A carefully designed entrance lobby with mirrors and false ceilings having led spot lights automated by sensor switches.

PARKING ILLUMINATION: Motion sensors installed for ease and low energy consumption of the parking lot area.

ELEVATOR: Latest gearless technology elevator to minimize sound during working. Having stainless steel lining, illumination and mirrors all in accordance with European Standards.

PART 5

PLUMBING SYSTEM

PIPEWORKS: Pipework's according to mechanical engineer instructions.

WATER SOLAR PANELS AND TANKS: Cold and hot water is provided via solar water heater panels and water tanks located at roof level. (or similar approved by the supervising architect)

PART 6

SANITARY FITTINGS, MIXERS & ACCESSORIES

BATHROOMS: High quality white sanitaryware and mixers in accordance with the European Standards, including accessories at a whole-sale total value of €700 +VAT per shower / bathroom area.

KITCHEN: High quality kitchen sink and mixer in accordance with the European Standards, at a whole-sale total value of €130 +VAT.

PART 7

ELECTRICAL INSTALLATION

WIRING: All wiring installation to comply with electricity authorities legislation.

INFRARED MOTION DETECTORS & TIME SWITCHES: Installed within all common areas.

VIDEO ENTRY PHONE: Located on the ground floor and is connected to all apartments & roof gardens.

TELEPHONE, TV & INTERNET: Within each bedroom, living area and balcony a T.V. point, telephone point and a provision for an Ethernet point is provided. Fiber internet provision also provided for each flat. Water proof sockets are provided on the balconies and roof gardens.

PART 8

AIR CONDITIONING

Within each bedroom and living area provisions are provided for A.C. split units

PART 9

ENERGY EFFICIENCY & PHOTOVOLTAICS

The building has an Energy Efficiency Certificate of Class 'A'.

Photovoltaic panels connected to the EAC net metering system are installed on the roof, able to serve at least two apartments (priority given on the upper floor apartment buyers).

PART 10

DOORS AND WINDOWS

Thermal insulated windows and balcony doors according to the energy certificate approved.

PART 11

TILING

Tiles at a whole-sale value of €15 + VAT / m2 for all living room areas, bedrooms, corridors, kitchen, bathrooms and balconies

PART 12

CARPENTRY

KITCHEN: High quality melamine wood or similar kitchen cupboards and drawers both above and below the granite counter with soft-closing mechanisms.

BEDROOMS: High quality melamine wood or similar, to be used for the wardrobes. Floor to ceiling spacious wardrobes with soft-closing mechanisms.

DOORS: Certified fire rated entrance doors.

PART 13

GRANITE TOPS

KITCHEN & BATHROOM: First class granite tops or similar, applied on the kitchen and bathrooms countertops at a whole-sale value of €140 + VAT / m.

